

Scania ProRemote

Information

Scania strongly recommends a trained Scania technician at an authorised workshop for doing the installation.

Software updates must be performed at authorised workshops only.

The device shall not be opened. If so, Scania warranty is void.

Limitations

This product is optimized for use with SESAMM6 trucks.

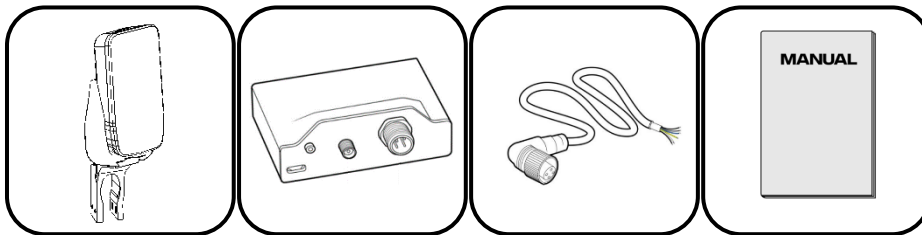
In order for the device to monitor the weight, the truck needs to have full air suspensions.

The truck needs to be equipped with the BCI (Bodywork) control unit and to have the EXT CAN-Bus enabled at 250kbps.

Attention:

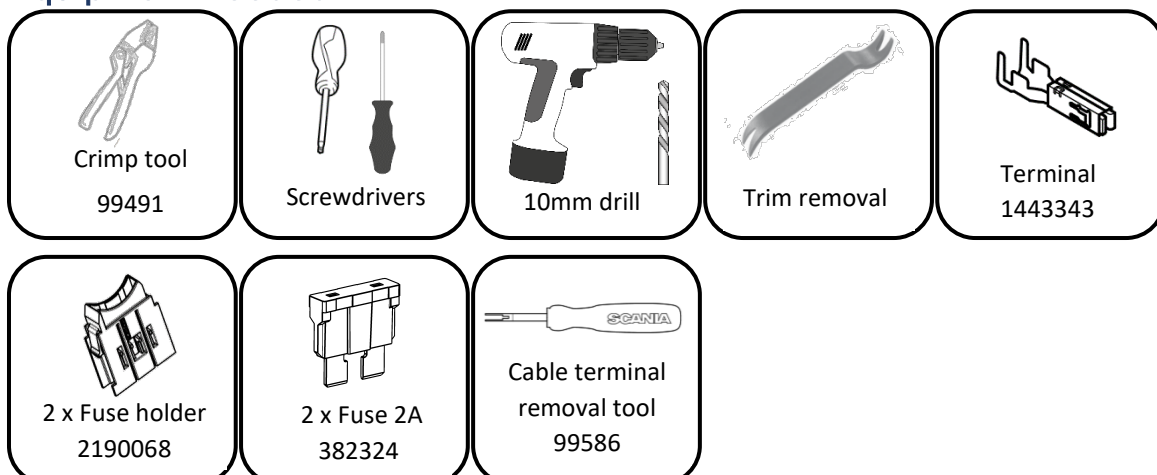
- the device may not work well together with certain bodyworks
- the device should not be installed in trucks equipped with side air bags – when docking station is mounted on the boarding grab handle

Kit Contents



- Docking station (+cable +M3 mounting screws) and hand-held controller unit (+power cable)
- Transmitter with antenna (+O-ring)
- CAN Bus cable for transmitter
- Instructions

Equipment needed



3190098
Mounting instruction
SCANIA

A wire-pulling tool is going to be necessary if the pipe that connects the two sides from inside the Instrument Panel is used to connect the Docking station to power in the central electronic unit.

Also, terminal handling tools may be employed to handle the removal of the terminals-pins.

Mounting

The 2 main components, the transmitter and the docking station, are installed under the roof on the passenger's side and on the top of the boarding grab handle on the driver's side respectively.

Transmitter

Power: 12/24 V DC

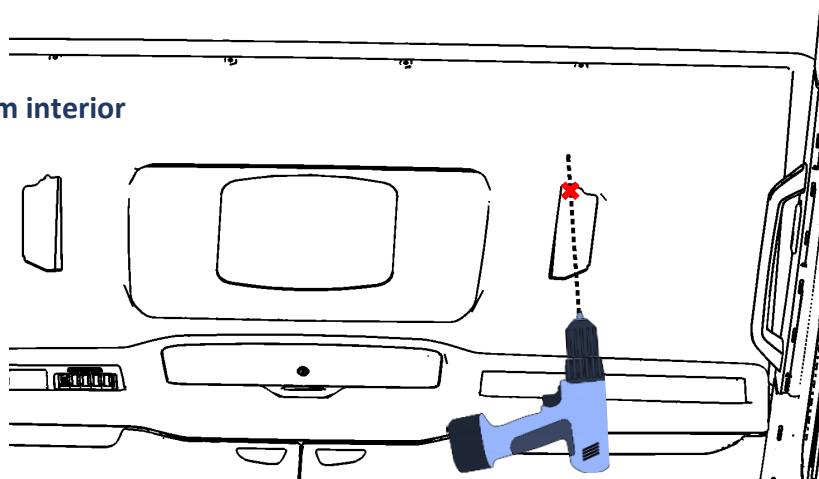
The transmitter is to be mounted between the roof panel and the roof body on the passenger's side. The roof is to be drilled so the transmitter's antenna to stand on the outside of the body. Any excess cable can be curled or cut.

A drill bit of 10mm is to be used to open a hole on the body of the cab either from inside or from outside. The exact location of the hole is not specified and can be made on will, as long as it doesn't interfere with other roof components. Sealing is done with the O-ring and other supplementary means if necessary.

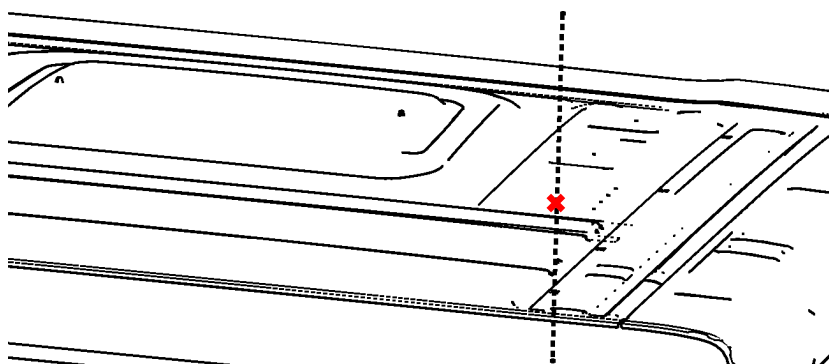
Attention:

- It must be ensured that the transmitter gets power only when the antenna is securely connected to the device and not otherwise.
- The two cable shields around the cables of the transmitter must be connected to ground.

From interior

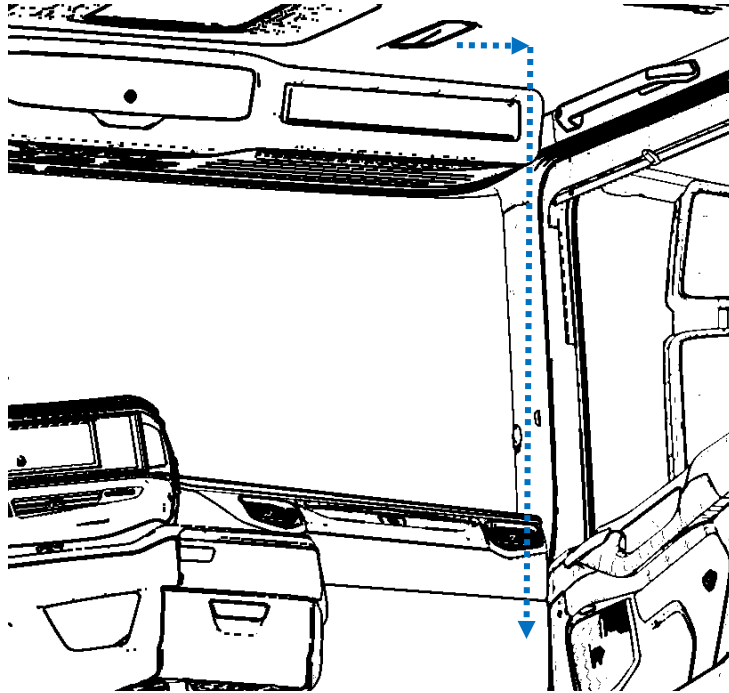


From exterior

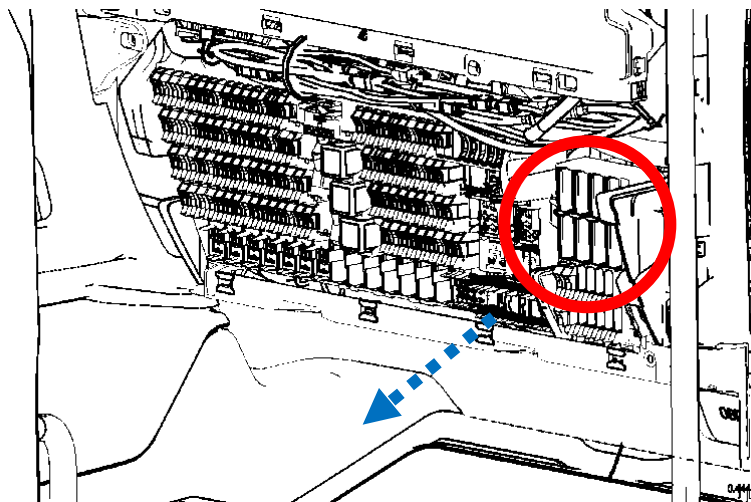


3190098
Mounting instruction
SCANIA

The cable routing from the transmitter resting on the roof to the central electronic unit is done through the A-pillar.



The CAN Bus cable is to be connected to the C493 connector of the BCI control unit after removing the smaller bodywork electronic unit from which it rests behind.

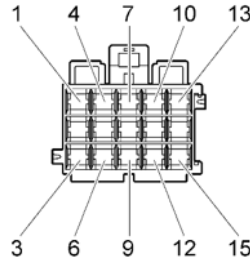
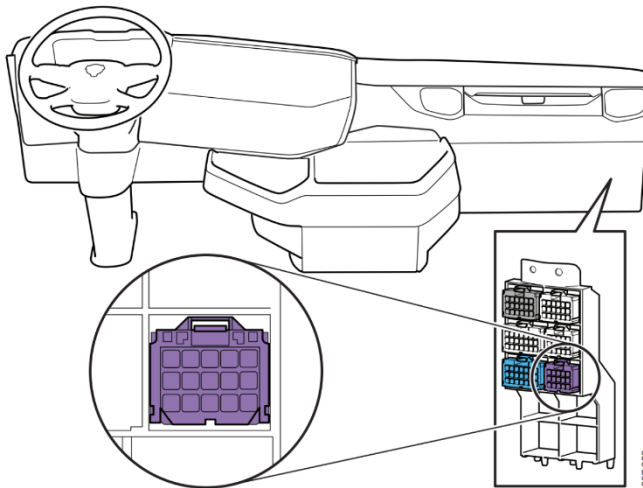


3190098

Mounting instruction

SCANIA

The C493 connector can be found in purple, as shown in the picture below. 2 of the cables are CAN-Bus wires and are to be connected to the C493 connector pins as shown below. There are 2 black cables that both are to be connected to ground. And finally the red cable goes to switched 24V power in the truck. The rest of the cables (should be 6 cables left over) should not be cut off, but kept on the side for potential future use.



RED	8-60V
BLACK	GROUND
WHITE	CAN-L (493-3)
BLUE	CAN-H (C493-4)
OUTPUT 1-6	NOT IN USE

Docking station

Power: 12/24 V DC

The docking station is to be installed on the top of the boarding grab handle, as shown in the picture below. It can be mounted on other positions depending on the needs, ergonomics requirements of each application and driver. Scania provides a bracket that fits the instep grab handle only.

Power for the docking station is recommended to be taken from the central electronic unit – the cable is long enough to reach that distance through the plastic pipe that ends up in the central electronic unit. Routing from docking station to the start of the pipe shall be done through the A-pillar.

If easier, power for the docking station may be taken from other sources on the instrument panel. There are a total of 3 cables. Two black and one red. Both black cables ties to ground while the red one ties to permanent 12/24 V so that power is always supplied even when the ignition is off.

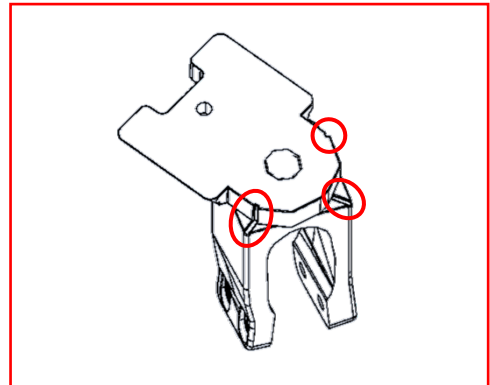
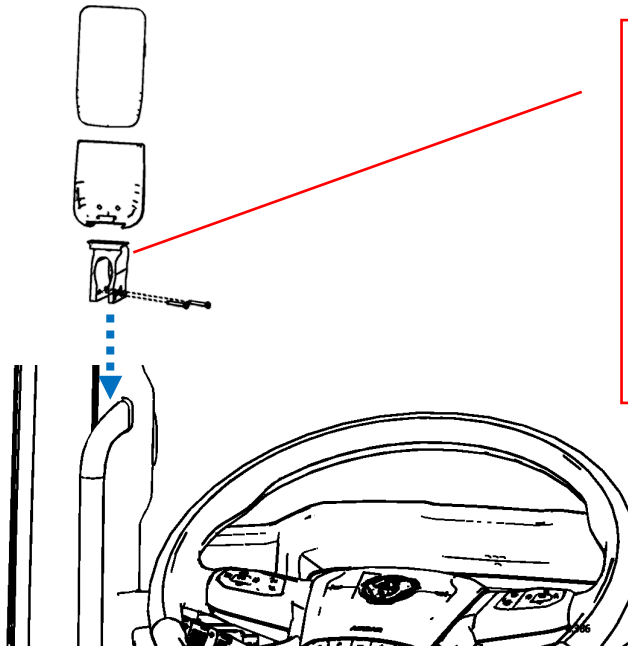
The small M3 screws must be screwed with attention in order to avoid any deformation of the clamp. The extra longer screw is included as a guide for tightening, and if used first to hold the clamp together, then it should be replaced with the shorter screw.

Only for Right-Hand-Drive trucks:

If the docking station is to be mounted in a Right-Hand-Drive truck, the upper part of the clamping bracket needs to be placed on the opposite position. After removing the screw, the pre-marked markings on the other side need to be aligned. The markings can be shown in the picture below.

3190098
Mounting instruction
SCANIA

only for RHD trucks:



The plastic empty pipe that connects the two sides can be found by removing the central electronic unit panel on the left of the steering wheel. A wire-pulling tool is to be used to push the cable to the other side through the pipe. The other end of the pipe can be found next to the BCI control unit, after removing the bodywork electronic unit, as shown above.

